

Ana Medeiros  
a.medeiros@entrelinha.com

padlet

Why Padlet

For school

For business

Help

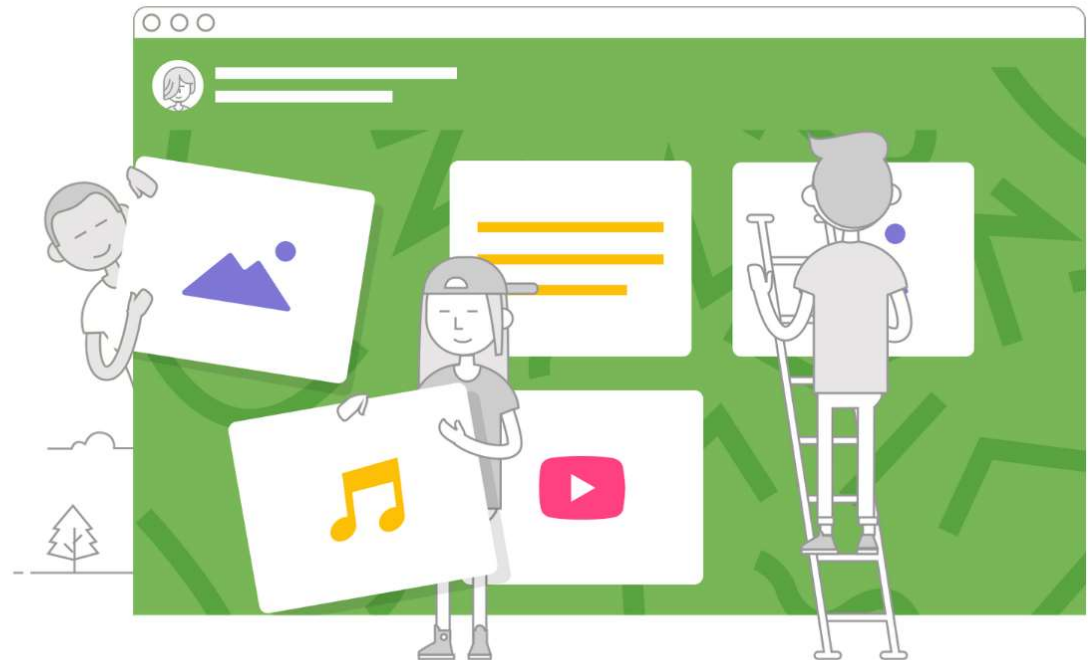
Log in

# Collaborate better. Be more productive.

Make beautiful boards, documents, and webpages that are easy to read and fun to contribute to.

SIGN UP

Already using Padlet? [Log in.](#)



<https://padlet.com/>

As simple as 1, 2, 3, 4





# padlet

Padlet is like paper for your screen. Start with an empty page and then put whatever you like on it. Upload a video, record an interview, snap a selfie, write your own text posts or upload some documents, and watch your padlet come to life. Once others add to it, the page will update in real time.



# padlet



## ELETRONIC PORTFOLIO

Is a tool that's supports learning process in a individually way or in a group way. Padlet is a wall that you can post your documents, videos, record your voice, explain and share ideas with all.



## ASSESSMENT

By sharing ideas, documents or any kind of information about a subject, teachers and students can reply by posting their feedback in each post, or can assess posts by adding symbols or scores



## COLLABORATION

It allows you to invite collaborators to add content, comment, like and make edits in real-time



# padlet



## SUPPORTS THE LEARNING PROCESS

Educators can post a particular topic or issue, and students can post their opinions on the subject. This is a great building block for teaching students how to write opinion pieces or persuasive essays.



## MONITORING LEARNING

Padlet can help teachers summarize a large amount of information and present it in a visually pleasing way. Educators can put in text, photos, graphs and other learning tools and share the image with students before a big test or discussion.



## GAMING

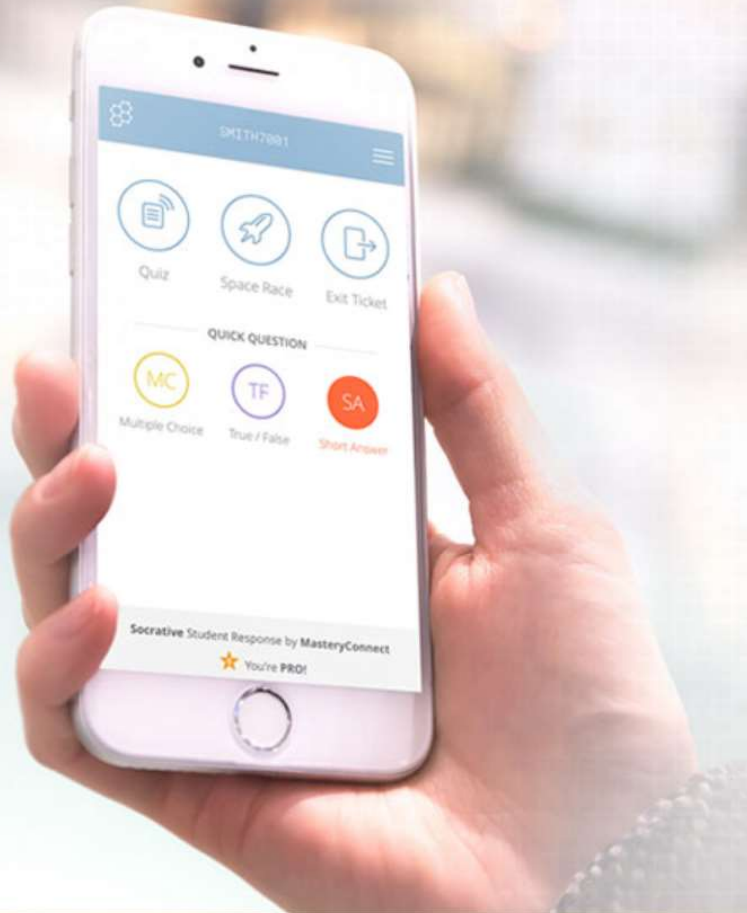
It provides gamification from the competition generated by interactivity in the classroom through a contest of images, texts, videos, with their assessment.



**padlet**

**VIDEO TUTORIAL:** <http://bit.ly/PADLETPT>

**PDF TUTORIAL:** <http://bit.ly/PADLETPDF>

[Plans](#)[Apps](#)[Get Help](#)[Blog](#)[STUDENT LOGIN](#)[TEACHER LOGIN](#)

## Meet Socrative

Your classroom app for fun, effective engagement and on-the-fly assessments.

[GET ACCOUNT](#)

<https://www.socrative.com/>





Socrative is a formative assessment tool which allows a teacher to check understanding of *all* students during a lesson, rather than just those they nominate or who put up their hand. It's designed for use in class, in real time.





## ASSESSMENT

Socrative is a web 2.0 tool that's allows you to assess, in real-time, your students by developing *quizzes*.



## LEARNING

Is a tool that's supports learning process in a individually way. It allows student respond to quizzes in their own rythim by moving forward to the next question with or with not feedback information of their answers.



## FEEDBACK

It can be used any where, at any time, pushing students' learning process.



## SUPPORTS THE LEARNING PROCESS

It can be used at home, in a determined period of time, as a resource to support the learning process.



## MONITORING LEARNING

Through a system of questions and answers the teacher can collect, in real time, the answers of the students, realizing better his understanding regarding the subjects in study in the class.



## GAMING

It provides gamification from the competition generated by interactivity in the classroom through mobile devices (smartphone or tablet).



professor Acesso

O email

Senha

CONECTAR

[Trocar a senha](#)

[Criar Conta em portugues-Brasil](#)



Faça login no Google

<https://b.socrative.com/login/teacher>



Acesso de Estudante

Nome da Sala

JUNTAR

 Português (Brasil) ▾

<https://b.socrative.com/login/student>



## TUTORIAL

**VIDEO TUTORIAL:** <http://bit.ly/SOCRATIVEPT>

**PDF TUTORIAL:** <http://bit.ly/pdftutorialSocrativeEN>



**Follow this workshop at ...**

**<https://padlet.com/amedeiros73/apps2018PT>**



**Thank you so much!**

**[a.medeiros@entrelinha.com](mailto:a.medeiros@entrelinha.com)**

**Ana Medeiros**